



The Ramble 387 - 17/01/22

The next Rambles will be on:-

Monday 25th January 2022 [388]

Monday 31st January 2022 [389]

Monday 7th February [390]

Monday 14th February [391] Might be a romantic edition.....

Monday 21st February [392]

Holidays

Monday 14th March [393]

The Archive List

The Ramble started as a list of which HLE 23s were still in service and which HLE 18s had been delivered. The UK hobby is to ride and we need to know what is available.

Over time the HLE 23s and HLE 26s were withdrawn and the HLE 18/19s all entered service. There were less changes and so these lists were moved to the Archive List. There have been little changes to the 6400s in the Netherlands and so this list has moved to the Archive.

This year I will refresh the Archive List and it will look the same as the Current List.



If You Go Down To The Woods Today.....

<https://www.hln.be/asse/werken-aan-fietssnelweg-leggen-spooklocomotief-bloot-plots-lijk-je-in-een-filmscene-beland-te-zijn~a599177f/>

“During a walk, Assen resident Samie Cobbaert has found a silent witness of Zellik's logistical past. Stunned, he found an old diesel locomotive hidden among the bushes. Reason behind the surprising find? The works on the bicycle highway between the Brusselsesteenweg and the Ringlaan in Assen. What will happen to the 'ghost locomotive' is still unknown.”

Line 21C

The two spans over the Albert Canal has been lifted into place. Whilst the line is closed the electrification is on-going.

<https://flickr.com/photos/andyengelen/51822634473/in/feed-43417760-1642278194-1-72157719991109247>

<https://flickr.com/photos/johnybrauns/51825081688/in/feed-42080457-1642374276-1-72157719991168733>

I suspect that Covid is once again causing problems at Salzinnes as some locomotives are had their shopping dates changed to later ones.

HLE 13

Interested in the Revision dates on 1304, 1310, 1327, 1339# & 1353#.
[# In Salzinnes Works].

- 1301 is back in service after fitting with ETCS.
- 1304 is back in service after a Grand Revision and fitting with ETCS at Salzinnes Works.
- 1315 caught fire on 4th September and is in Salzinnes Works for repairs.
Due out in January 2022.
- 1323 is at Salzinnes Works for fitting with ETCS.
- 1331 is at Salzinnes Works for fitting with ETCS.
- 1339 is in Salzinnes Works for a Grand Revision. The loco should have been finished for Christmas but may be out this week.
- 1353 is in Salzinnes Works for a Grand Revision and is due back mid February.

HLE 18/19

Interested in the Intermediate Revision dates on 1807#, 1873, 1887 and 1896#.
[# In Salzinnes Works].

- 1807 is in Salzinnes for an Intermediate Revision and was expected back just before Christmas. Should be out this week.
- 1873 is back in service after an Intermediate Revision at Salzinnes Works.
- 1887 is in Salzinnes for an Intermediate Revision and collision repairs. Expected back in mid February 2022.
- 1896 is in Salzinnes for an Intermediate Revision and expected back late January 2022.

HLE 21

The hit listed HLE 21s and their last reported working on Haltelink.

<https://track.haltelink.be/nmbs.html>

2115	27/12/21 [Gone?]
2123	17/01/22
2131	14/01/22
2139	17/01/22
2149	17/01/22
2154	17/01/22

What has happened with other locomotives in Belgium is a date is set for the locomotive to be stopped. The locomotive can run past this date and is actually stopped when it next goes on depot for an exam, or it develops a fault. Some of the HLE 23s have an Official withdrawal date at the timetable change in December, but were actually still working in January the following year.

HLE 27

- 2743 is at Kinkempois and looks to have been stopped in December 2021 for component recovery. Repairs may have exceeded the budget limit.
- 2748 is at Salzinnes Works and may be being worked on. Stopped March 2021
- 2751 is at Kinkempois and was stopped in August 2021. For component recovery. Repairs may have exceeded the budget limit.
- 2758 is back in service having been stopped in February 2021.
I think 2758 has been lucky.



2748 is seen here on 29th September 2021 and I would be interested to know if it has moved. Photo by Nick FitzGerald.

HLE 28

Admissions Corner - I made a mistake. 2808 has indeed had an internal fire but I put down 2806 on the spreadsheet. Only when Tim e-mailed in to say that 2806/186 198 was in service did I spot my mistake.

- 2808 has had an internal fire and is on repair at Antwerpen Noord.
Due back in September 2022.
- 2843 May be in passenger service for the end of January.

HLD 51

Here is 5101 being loaded into a ship on 20th March 2008 and exported to Morocco. Photo by Pierre Herbeit.



Here is 5186 sat on stands at Auvélais on 5th January 2022. The locomotive is being stripped for spares and will be cut up in 2022. Photo by Pierre Herbeit.



HLE 55

5501, 5506, 5509[?], 5511 and 5512 moved to Antwerpen Noord Depot on 1st January 2022. The locomotives are being hired from NMBS/SNCB to TUC Rail. B-Technics are responsible for the maintenance at Antwerpen and TUC Rail control them operationally.

So the HLE 55s are now joining the Brussels Area to Antwerpen Noord loco transfer movements. Here is 7796 hauling 5506 and 6296 back to base for some TLC.

<https://www.flickr.com/photos/135235560@N07/51819573515/in/dateposted/>

As their work is primarily on Line 1 they will continue to be seen around the Schaarbeek area.

5509

All the information I have received is that four TVM locomotives were being retained and two TVM fitted 55s were being withdrawn. I had seen that 5509 had been stopped at Schaarbeek depot for maintenance on 27/12/20 and 5514 had been stopped for maintenance on 20/01/20.

Then I am sent a photo by Julien Casier showing a working 5509 running through Brussels on 21st April 2021! 5509 is leading and is operational.



Here is another photo here of the 5509 running on 30th December.

<https://www.flickr.com/photos/135235560@N07/51787514586/in/dateposted/>

As time is going on, more and more ghosts are appearing in the information and this is compounded by the regular observers not going to Belgium as much. You cannot check everything all the time and it is only when some information is queried, do you find a fault.

HLD 62

Interested in the Revision dates on:-

Blue - 6214#, 6216, 6243, 6249*, 6262, 6275, 6295# and 6329#.

[* Panels are blank/incorrect # In Salzinnes Works].

Yellow - 6247 [park], 6274 [park] and 6292 [park]* [* Panels are blank].

6202 is back in service after being fitted with ETCS and a working third headlight.

6203 Ceased working on 31/12/21 and is to move to Salzinnes Works for component recovery in January 2022.

6207 is in Salzinnes Works for fitting with ETCS and a working third headlight.

6214 is in Salzinnes Works for an Intermediate Revision, working third headlight and ETCS. Due out sometime around my Birthday - 12th May 2022.

6247 is to move to Salzinnes Works for component recovery in January 2022.

6267 is in Salzinnes Works for fitting with ETCS and a working third headlight. It is also getting repairs to some accident damage. Due out for Christmas 2021.

6292 has ceased working and is currently in Park at Schaarbeek.

6295 is in Salzinnes Works for an Intermediate Revision, working third headlight and ETCS. Due out for Christmas 2021 and is overdue.

6328 planned for store at the end of 2022. Any serious accident, or failure, that requires large expenditure and the locomotive will be withdrawn.

6329 is in Salzinnes Works for an Intermediate Revision, working third headlight and ETCS. Due out sometime in late March 2022.

Called in for Revision in 2021 were 6214#, 6295#, & 6329#. 6305 was also due for revision in 2021 and I would not be surprised if 6305 gets the call to Salzinnes when either 6267 or 6295 is ready for testing and no longer in the workshop.

I do not know if 6305 is still in service.

HLR 77/78

7787 is this locomotive in service?

ICNG

3301 left Belgium on Thursday 13th January, Seen here at Langdorp in very poor light at 17:20. 3301 is in a state having been got at by the "Artists". Photos by Bart.





Norichten aus Lëtzebuerg

Reporting from Graham Belton

CFL have now leased a ninth G1000 BB:-

<https://www.loks-aus-kiel.de/index.php?nav=1406157&id=20888&action=portrait>

The loco was mainly used at Belval at first as it was not equipped with ETCS. This was then fitted during the summer and loco was sent to the wagon shops in Petange for a repaint, being released in December carrying the number 1109:-

<https://rail.lu/materiel/cfl1100.html>

CFL have a huge maintenance backlog with 2000s, 2200s and Dosto stock parked outside the CRM waiting their turn. 2018 and 2214 have been waiting for a long while now.

Apparently the projected sale of seven 3000s in September 2022 went nowhere, which could be why they now have increased work on passenger trains. None have been placed into store yet as CFL are desperately short of power.

4004 is now stored and has been parked next to withdrawn 3012 at Howald. It is hoped that she will eventually be repaired. Bit of a mystery surrounding

4002 has not worked passenger since May 2021, and has been parked on the CRM since September. I have seen her pan up a couple of times but still she remains always on the CRM. 4002 finally re-entered service on 13th January being seen on RE463.

NMBS/SNCB 08 553 and 08 554 are now operating off Arlon.

14th January - 188s 005 and 006 are back in Lux and are presently stabled at Bettembourg. Yesterday they were transferred from Kassel, being sighted on the DSO forum passing through Giessen, Frankfurt and Koblenz, dragged by 111 215.

L50 - Seems to be one I11 turn now worked by 18s, the others are still 13s for now. 1861 has replaced 1857 on the 2106-2133-2114-2141 turn.

L70 - There has been a marked downturn in the reliability of the service since the disastrous introduction of the class 3000s with daily late running and services turning around short or just being outright cancelled. Not uncommon for Athus to have no service for 90 minutes.

L165/3 - this newly constructed line is all rusted over due to no traffic. The line is now closed again for 2 weeks to allow work on the embankment adjacent to the bridge carrying the N830 road over the line. The N830 is also closed causing traffic chaos in Rodange and the surrounding area. The line and road are also due to be closed again for 2 months in July and August this summer.

DB Diversions

DB - Just across the border, rare track available from 27 Jun-5 Aug 2022 when Konz Mitte to Karthaus is closed to all traffic. The following services are diverted via the rare curve from Konz, over the Moselle and via Trier West (no stop) to Ehrang Ort and Wittlich:-

05:02 Perl-Wittlich (RB12151)
16:20 Wittlich-Perl (RB12168)
21:42 Wittlich-Perl (RB12128)

Details for RB12168 here:-

https://reiseauskunft.bahn.de/bin/traininfo.exe/dn/56505/189724/477682/220006/81?ld=43146&protocol=https:&seqnr=4&ident=I5.07515146.1641934246&date=27.06.22&station_evald=8000379&station_type=dep¤tReferrer=tp&rt=1&rtMode=DB-HYBRID&&time=16:20¤tJourneyClass=2&

Train 1900 - Fond de Gras

Sundays/Holidays 1 May-25 Sep 2022

14:45 Fond de Gras-Petange 1900, 15;15 return work again with a diesel, expected to be SNCB 7309.

Events

1 May 2022 - Season opens
22 May 2022 - Cockerill day featuring 503
25 June 2022 - Viva Italia (?)
09 July 2022 - Blues Express
24 July 2022 - Old Cars day
21 Aug 2022 - Special Day (to be announced)
04 Sep 2022 - Open Day
24/25 Sep 2022 - Steampunk

No mention of a diesel day. Could be what they have planned for 21 Aug, or maybe a repeat in Oct? Time will tell.

Thanks to Graham for this information.

NSR Units**SNG**

Delivered: 3030 (12/01/22)

SGM

Scrapped: 2136, 2962 and Bk1 of 2992 (11/01/22)

DDZ

All 7600 series 6-car units have now returned to service except 7647.

7639 has only been used in service for a short time in the morning of 6th December.

ICNG

3301 left Schaarbeek and returned to Germany on Thursday 13th January.

<https://flickr.com/photos/135235560@N07/51818974688/in/feed-135214230>

Coming the other way on Sunday 16th January is 3207.

<https://www.youtube.com/watch?v=d4cz-ujjES4>

This is the first production eight car ICNG in town and it is these eight car sets that NS need to displace the ICRm sets and TRAXX locomotives on the ICD services.

There are two things to note. One is the belt and braces approach to transporting these units. Note the through brake pipe coming out of the window of the back cab door and taped to the side of the unit. The German Authorities obviously still do not trust the through pipe and braking system on the unit itself. The other thing to note is how long it takes NS/Alstom to get 3207 out on the mainline. If the set is out by the end of the week then it will have had a basic exam on Watergraafsmeer and is effectively ready to run. If this happens to 3207 then the following sets can be done just as quickly.

The constraining thing is space on Watergraafsmeer. If the depot is full of ICRm and TRAXX then it cannot hold very many ICNG units. Equally if it is full of in service ICNG units then it cannot hold many ICRm sets either.

When the ICNG sets come into service the ICRm and TRAXX will initially go into warm store with the ability to run them at a moments notice. The sidings for the warm store of the ICRm and TRAXX is at Arnhem and I expect there will be a daily movement onto, and off, these sidings. I do expect some ICRm sets to be broken up and the Benelux sets strengthened.

There are passenger loading tests to do yet with the ICNG and there is lot of paperwork to be completed. So the introduction of these ICNG sets is sometime off yet. I can foresee the ICD Amsterdam – Rotterdam and Amsterdam – Breda going ICNG this December, possibly Amsterdam – Rotterdam in September.

The clock is ticking a little bit louder today.

Class 1800

1828 has been re liveried over the Christmas Break at the LWR Depot at Maasvlakte. The loco is now in Rail Force One livery with the edition of a Dutch flag toothpaste stripe.



Betuweroote Diversions in 2022

Graham Belton Reports,

Diversions of ICE and NJ between Utrecht and Arnhem via the Betuweroote on the following dates:-

07-22 Aug

01-02, 24-26 Oct

26-27 Nov

already loaded in Hafas

A Little Blast From The Past

This week's little blast is 219 and is seen here at Maastricht on 2nd January 2002.



Photo by Glos Old Spot

219 was built by Werkspoor and is Works Number 669 of 1935.

Owner - Cut up in October 2003

Location - N/A

Information from <http://locomotor.nl/index.php/locaties/>



Other News

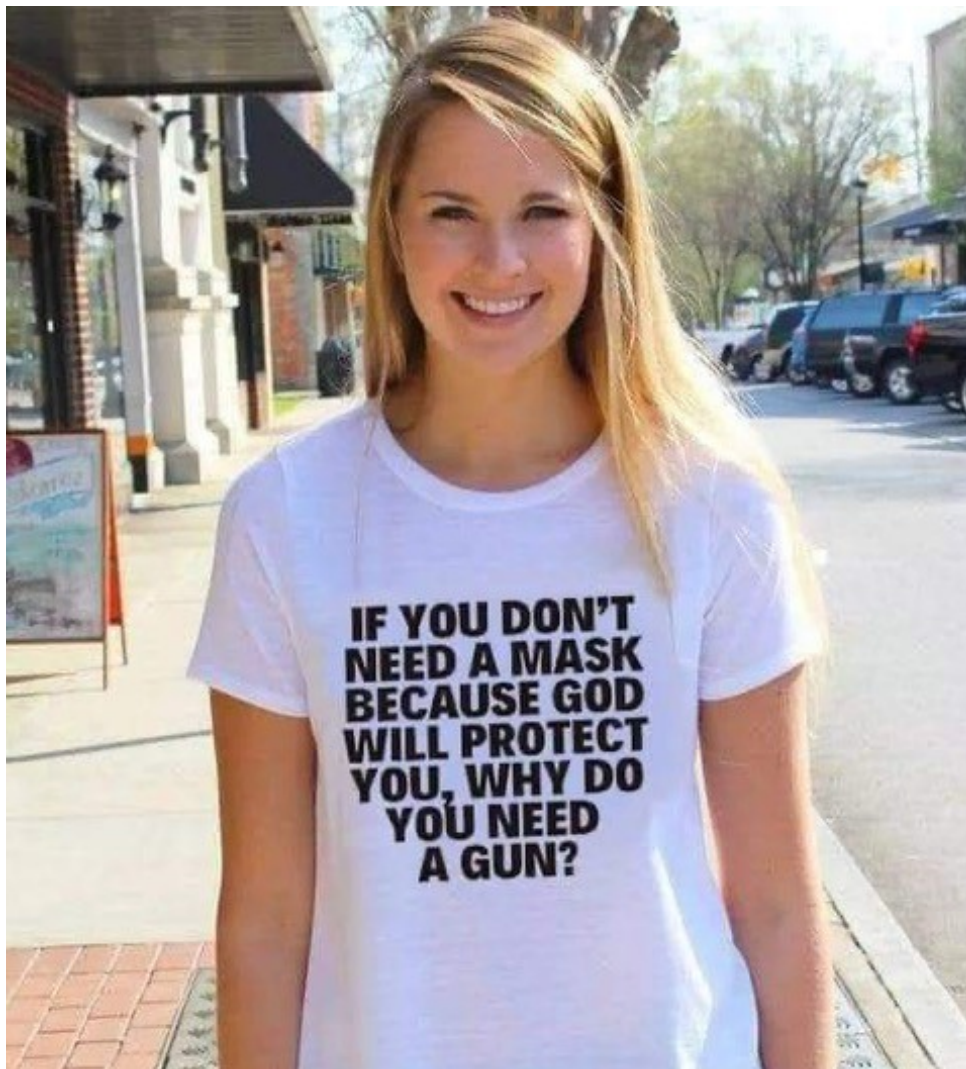
Sitting in the ER.
Don't really want
to get into details,
but the "Dyson Ball
Cleaner" is a very
misleading product
name



Ladies in T-Shirts



If you are not sure who Patsy is then see [here](#).



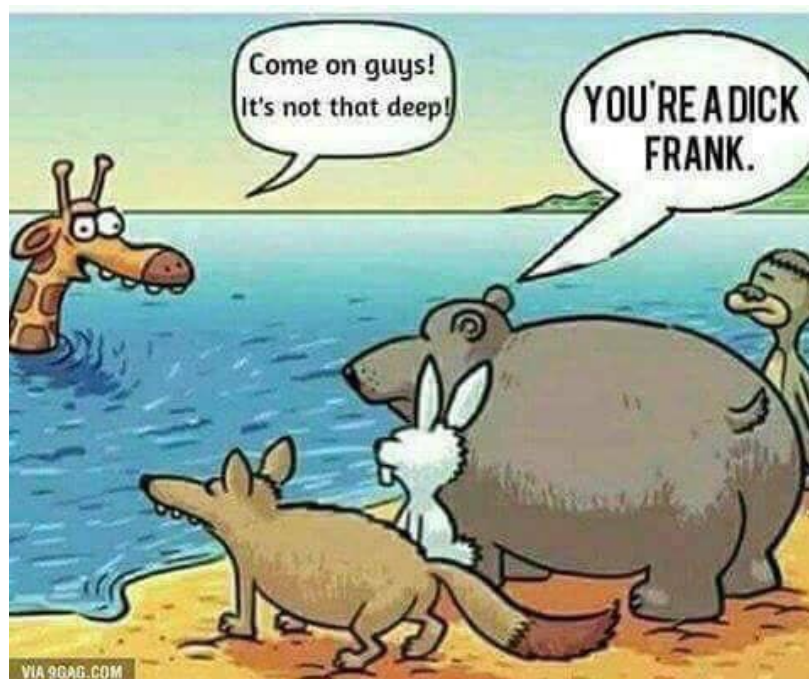
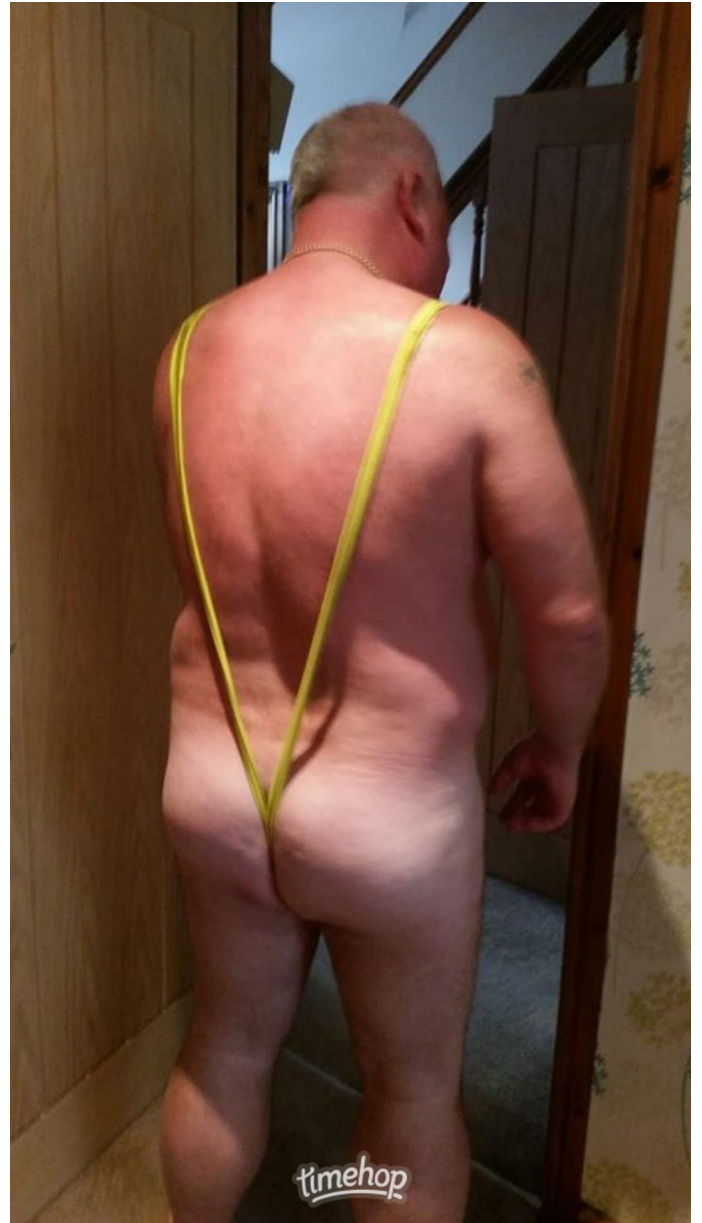
Some on here might not agree with the message but she is very pretty.

Gun control in the USA is something the rest of the world looks at and goes ?

Thoughts and prayers.



We cannot leave the ladies out and so we have Mr Nigel Daff, train driver, enthusiast and top chap in a mankini!



caffeine...I thought this lady was a Muppet.



Have a nice week

Tain