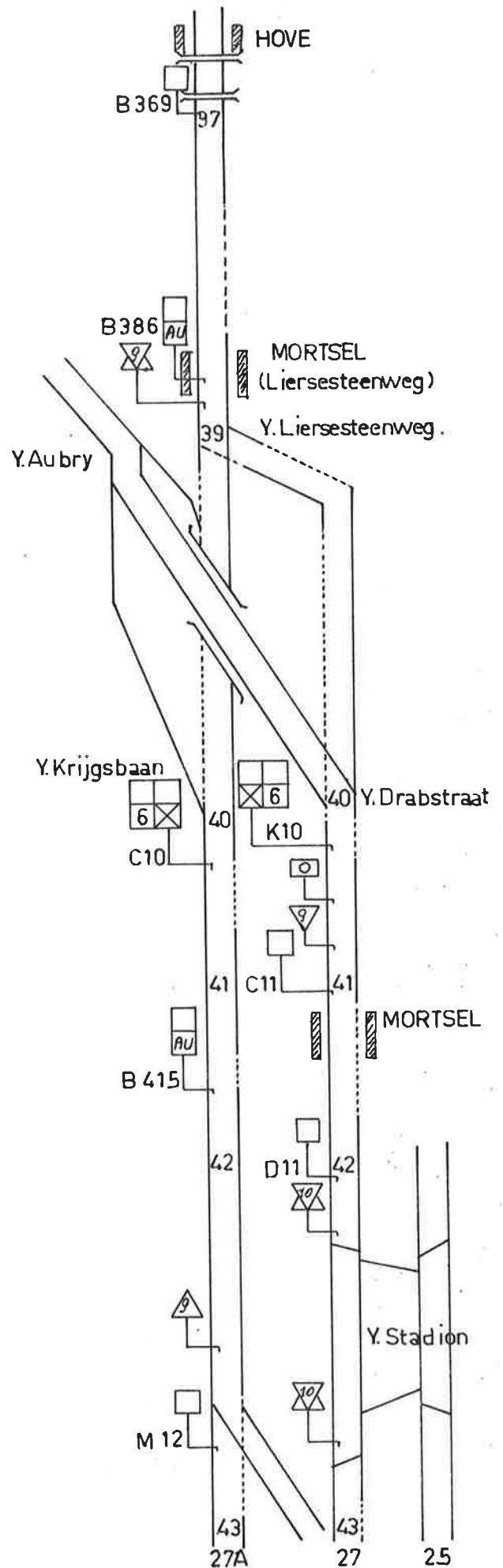
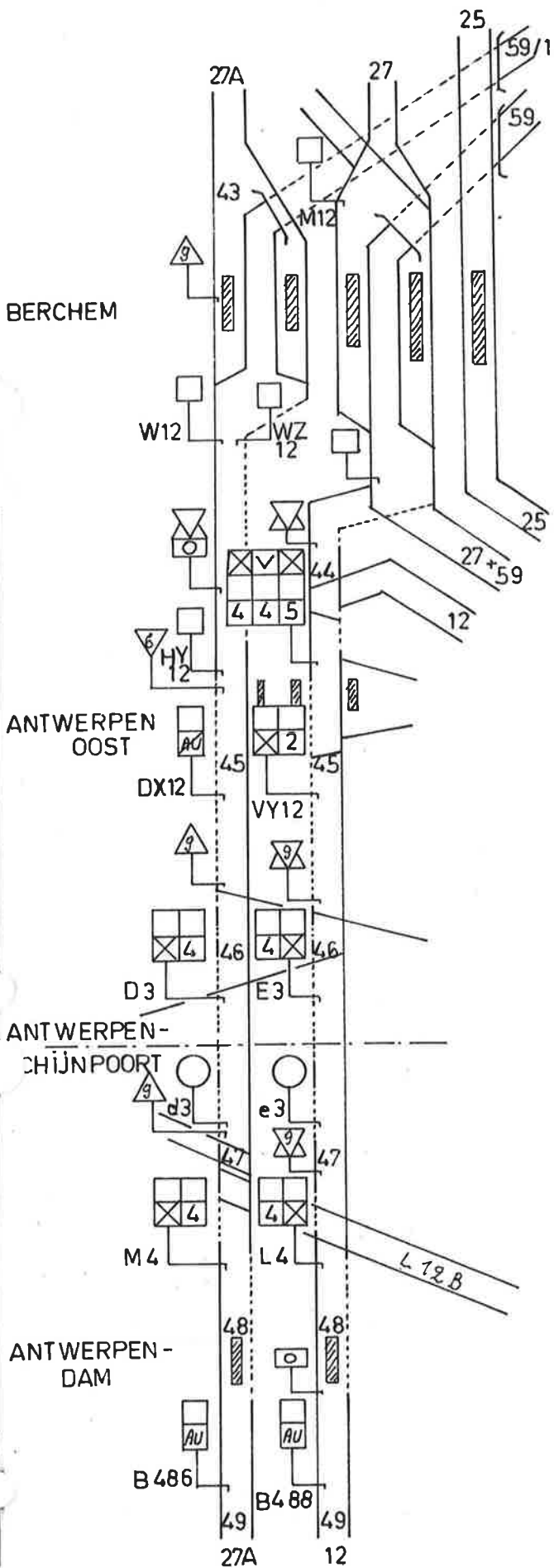


L.27A-STOCATRA - HOVE.

Nº27A - B1 - 0575.



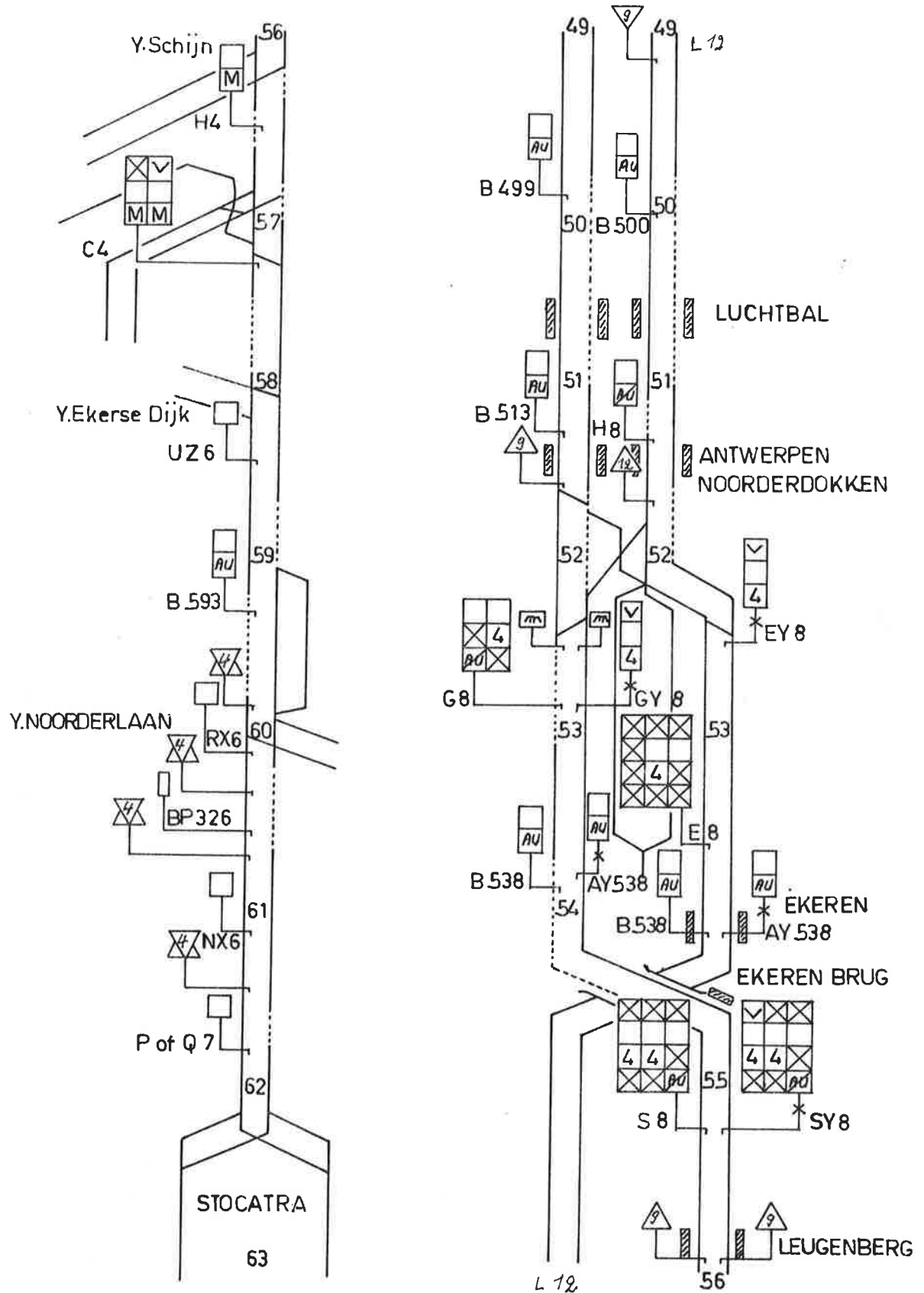
(B) 36/403-1-75 (2500)

L.27A - STOCATRA - HOVE. +

Nº 27A - B1 - 0575.

Omlleidingsreiswegen lijn 27.

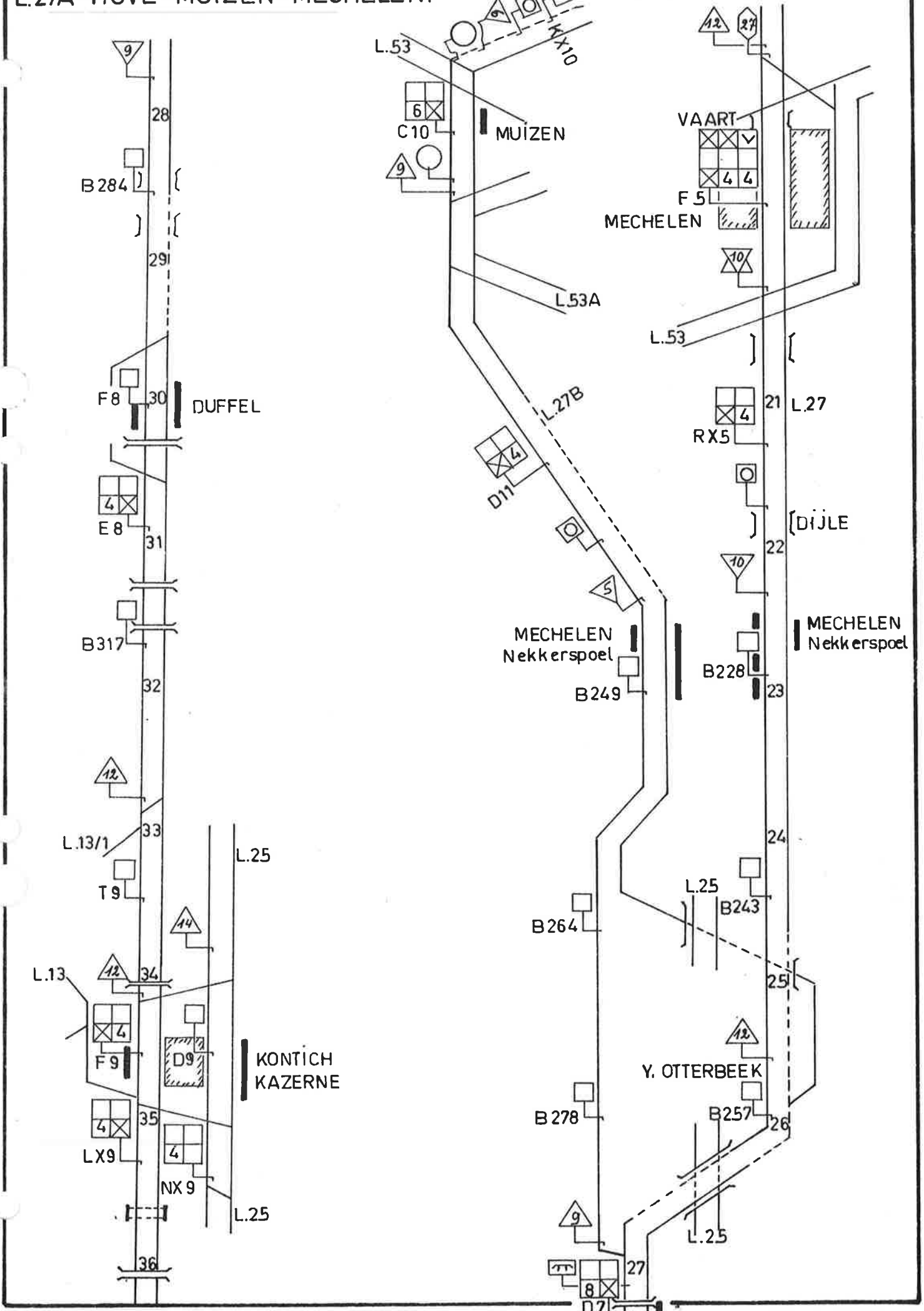
Itinéraires de détournement ligne 27.



(B) 367403-7-75(2500)

L.27A - HOVE - MUIZEN - MECHELEN.

Nº27A - B2 - 0575.

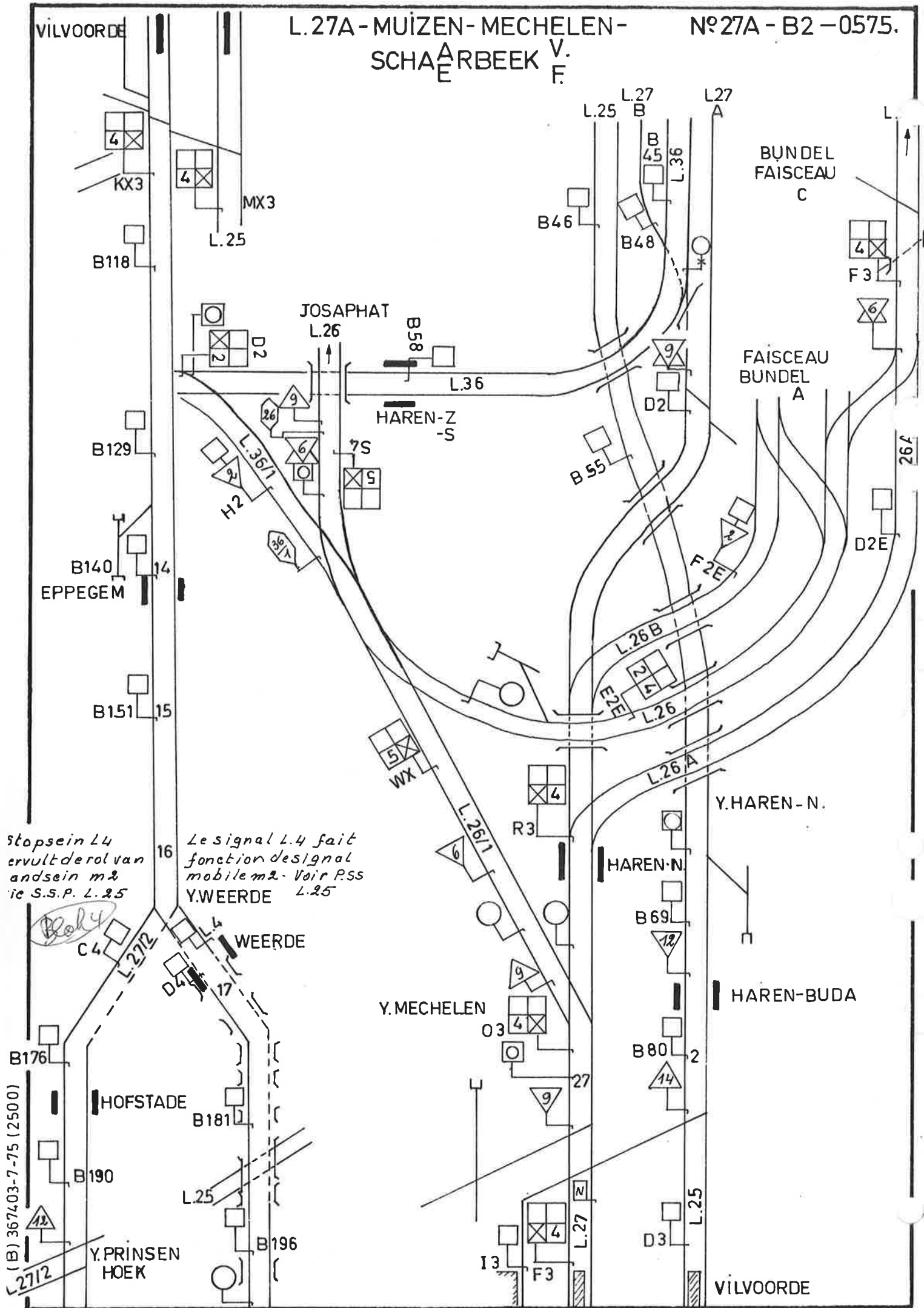


(B) 3674.03-75 (2500)

VILVOORDE

L.27A - MUIZEN - MECHELEN -
SCHARBEEK V.F.

N°27A - B2 - 0575.



stopsein L4
vervult der rol van
andsein m2
ic S.S.P. L.25

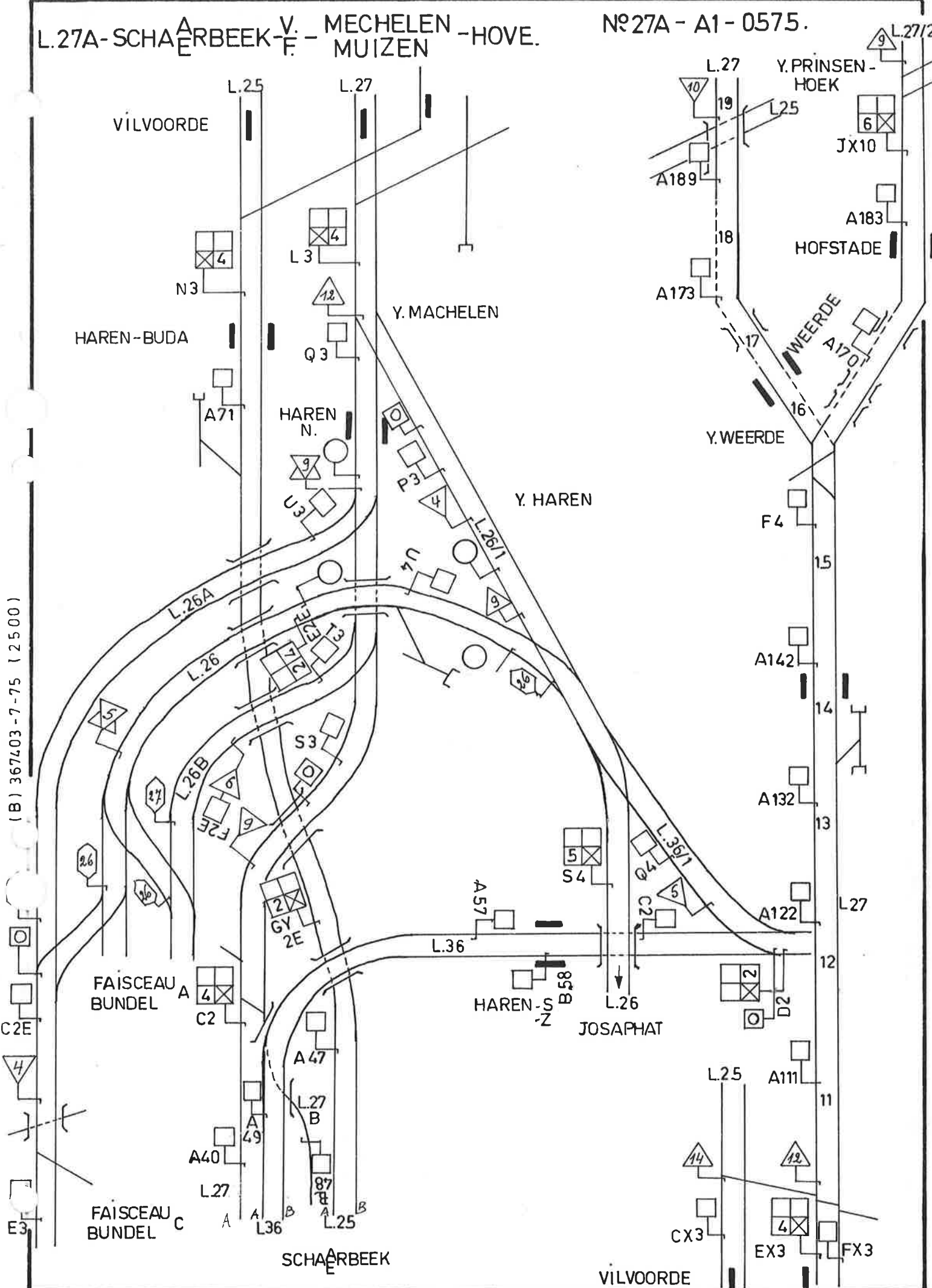
Le signal L.4 fait
fonction designal
mobile m2. Voir P.S.S
L.25

(B) 367403-7-75 (2500)

26f

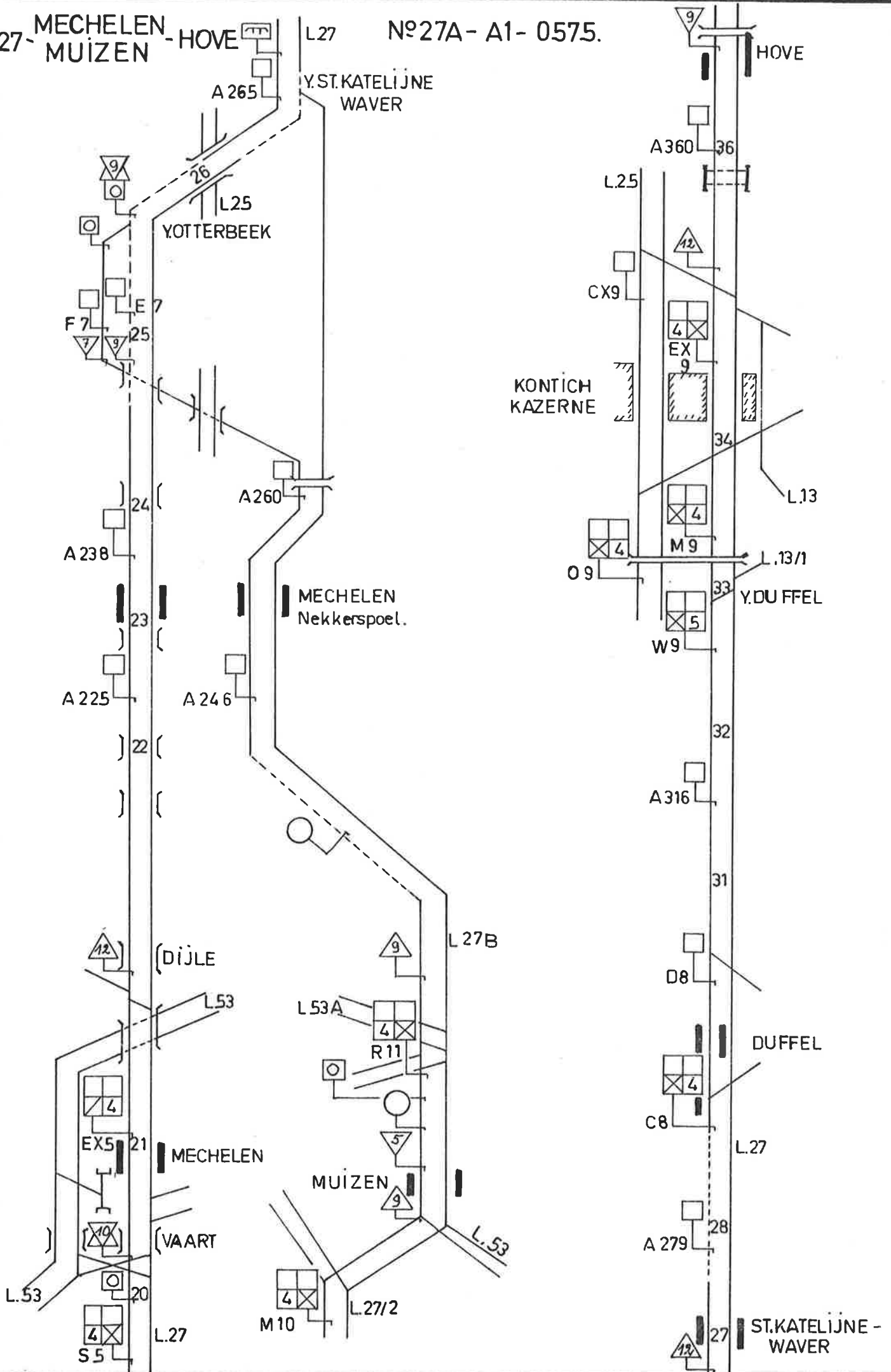
L

(B) 367403-7-75 (2500)

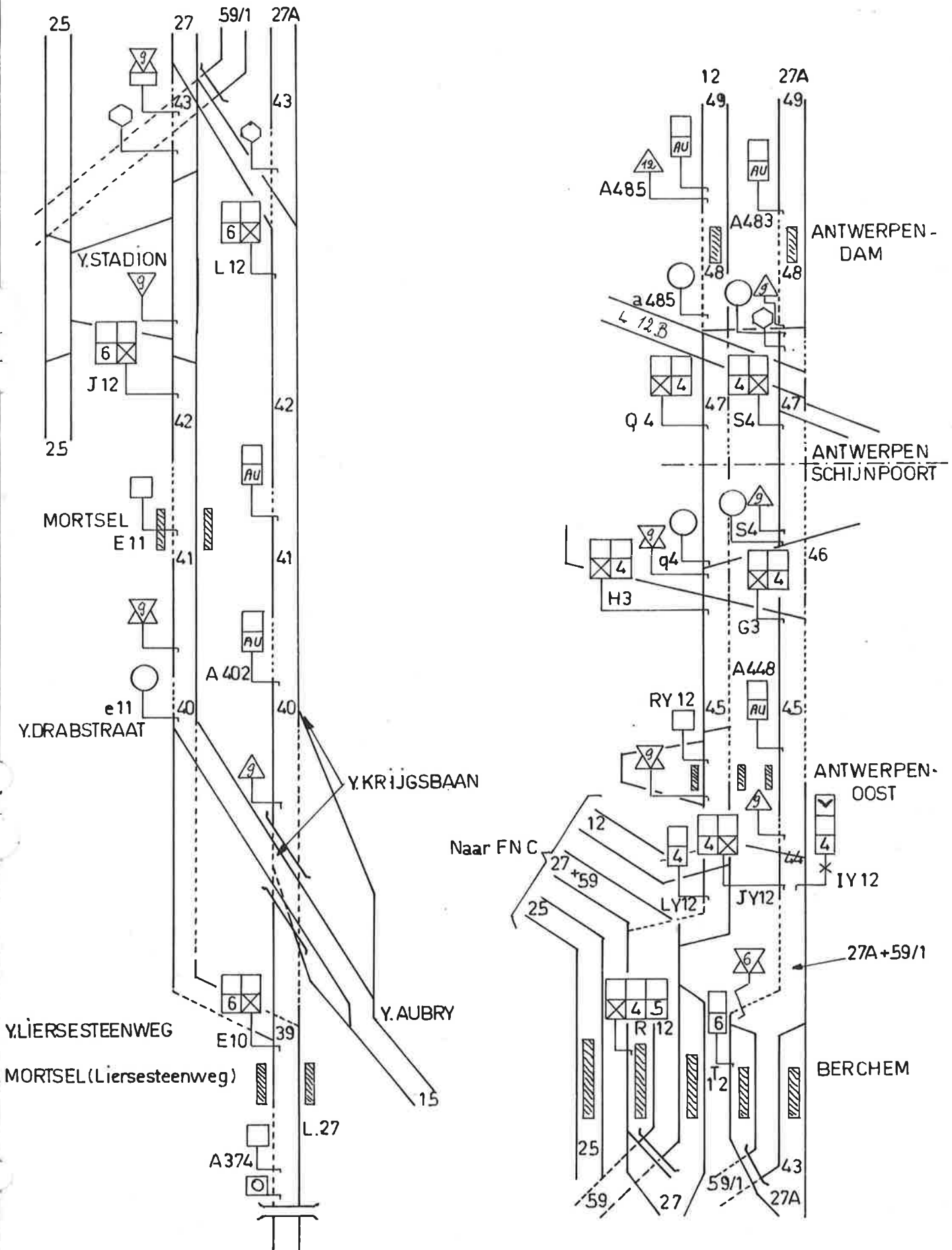


L.27- MECHELEN - HOVE
MUIZEN

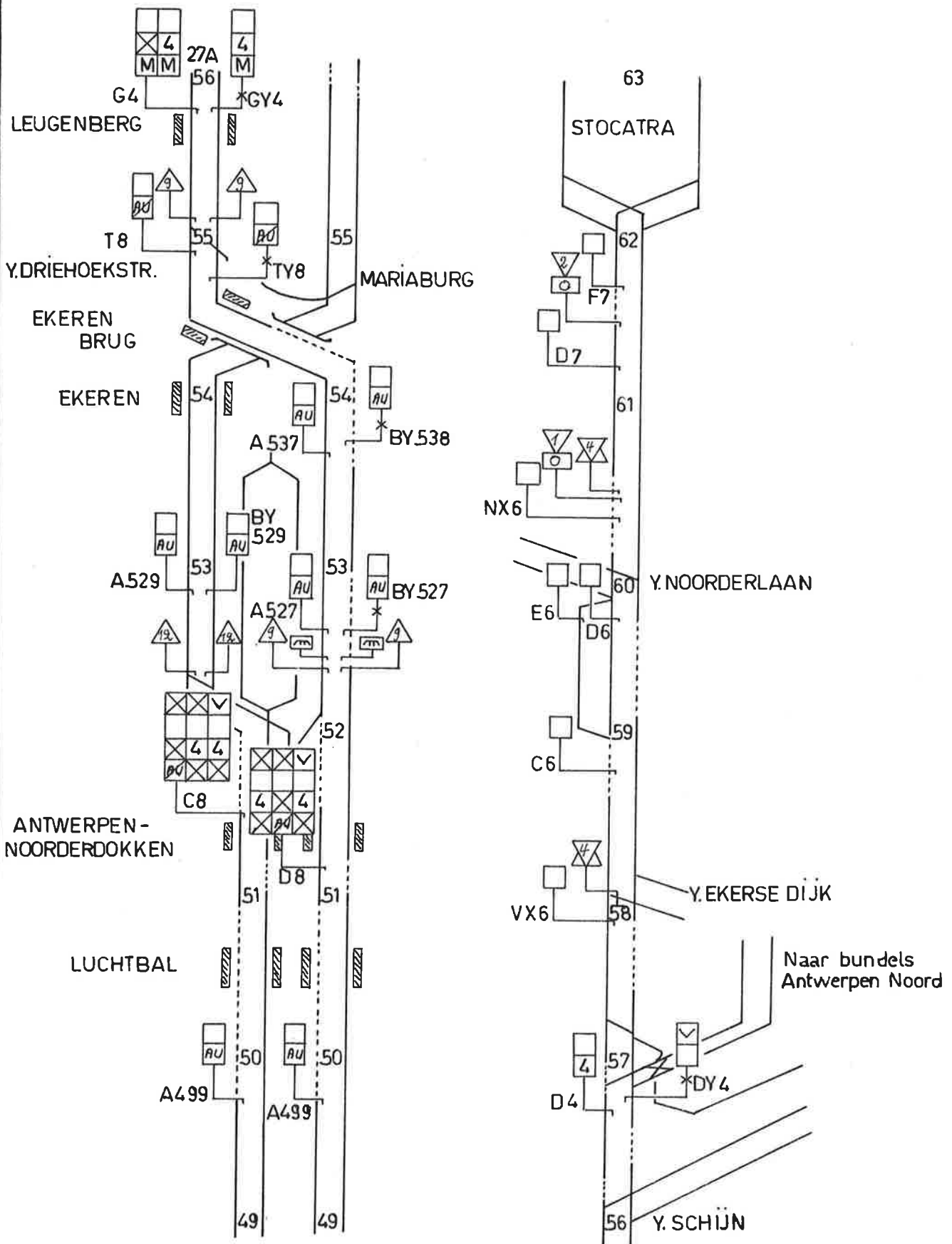
Nº27A - A1 - 0575.



(B) 367403 - 7 - 75 (2500)



(B) 3674 0.2 - 7-75 (2500)



(B) 367403 - 7 - 75 (2500)